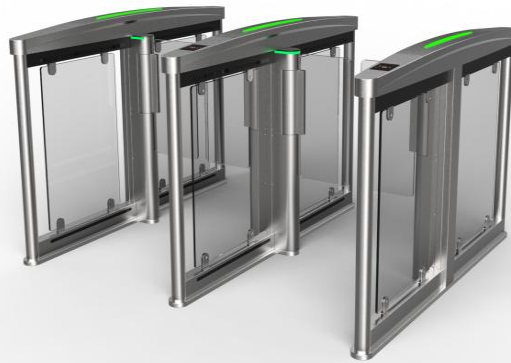




# ZOOMGATE

## Model: ASW-AR-12



### Parameters

Product name	Speed gate
Model	ASW- AR -12
Cabinet material	SUS304 stainless steel +Aluminum Alloy
Arm material	Acrylic(tempered glass for optional)
Size	1600*140*1030 mm
Voltage	AC220±10%V 50±10%HZ
Driving motor	DC24V servo motor
Passing LED indicator	Motor and arm with LED indicator
Method of positioning	servo motor + clutch + encoder
Direction of passing	Uni-directional/Bi-directional
Passing width	600~900mm
IR sensor	8 pairs
Working environment	Indoor, -25℃~70℃
Relative humidity	≤90%, no condensation
Opening speed	Fastest 0.3s, adjustable
Passing speed	35-40 people/min
MTBF	20 million times
Angle of gate opening	90°±5 °
Noise	<50dB
Communication interface	Level/Pulse/RS485/RS232
Input interface	Relay(dry contact)
IP level	IP42
Power	100W(left/right), 200W(middle)
Color	Champagne gold+black

### Advantages

1. Adopt hidden IR sensor style;
2. Apply screwless design to the whole cabinet;
3. There is no keyhole around the whole cabinet;
4. The gap between top cover parts and body parts ≤ 0.2mm.

### Functions

- ① Anti-trailing alarm and anti-reverse;
- ② Buzz with light alarm if illegal entry;
- ③ With voice broadcast(volume can be adjusted);
- ④ With memory opening function (up to 500 times), delay closing and overtime closing functions;
- ⑤ With function of counting the number of people passing;
- ⑥ With standard fire alarm input interface, the gate will automatically open in case of fire;
- ⑦ With anti-break-in function: the wings will automatically close unless received open signal;
- ⑧ With anti-pinch function: the wings will stop running and rebound to a certain angle when it is blocked during operating;
- ⑨ With IR sensor anti-pinch function: when gate is closing, the wings will automatically open if detect people in the aisle
- ⑩ With power-on self-test function;
- ⑪ With power-off free passing function, in line with fire protection requirements;
- ⑫ With automatic reset function: after reading a valid card, if pedestrian does not pass within the specified time (default 5 seconds, configurable), the system will automatically clear the pedestrian's rights to pass for this time;
- ⑬ With multiple protection when passing:
  - a. IR sensor anti-pinch
  - b. Traffic logic anti-pinch
  - c. Current detection anti-pinch
- ⑭ When the trailing mode is turned on, there are two traffic modes:
  - a. alarm while wings opening
  - b. alarm while wings closing
- ⑮ When the anti-reverse mode is turned on, there are three modes:
  - a. alarm while wings opening
  - b. alarm while wings closing, and clear the right to pass
  - c. alarm while wings closing, and retain the right to pass
- ⑯ The parameters can be set uniformly through the buttons and the LCD screen.

### Dimension

