

Tomorrow's  
Technology  
Today.



ICTProtegeWX: The future is here.

## Introducing ProtegeWX

At ICT we're committed to delivering **industry-leading technology** straight to the people who need it most. We already have some pretty awesome products (even if we do say so ourselves). Now we're redefining electronic security as you know it. We've taken some of the core features from our enterprise level Protege GX system to develop the Protege WX package – **an all-in-one solution** that makes electronic access control, intrusion detection and building automation **even more accessible**.

With no software to install, Protege WX is an **out of the box** solution that ships ready to plug and play. An intuitive web-based interface provides truly **cross-platform, anywhere anytime ease of access**. Don't settle for being confined to a single workstation. Use your desktop, laptop, tablet, or smartphone – all you need is a web browser and you have access to Protege WX.

A highly integrated 32 bit microprocessor based integrated system controller and optional expandable modules, provide a feature packed adaptive system.

- Web based architecture for cross-platform access and flexible configuration
- Intuitive wizard-driven interface for quick and easy deployment
- Simple, intuitive user and event reporting
- Reports exportable to CSV format for easy filtering in spreadsheet applications
- Compatible with all Protege expander modules and accessories
- Optional WXpert mode to unlock advanced features

**ICTProtegeWX**.<sup>®</sup>



## Just open the box and 1, 2, 3...

The Protege WX package is an out-of-the-box, all-in-one system. With no software to install, you will be up and running in no time. Simply unpack the box, connect the Controller and Power Supply, and launch your web browser.

The intuitive wizard-driven interface guides you through the process to configure your system, and you have a fully functional access control and intrusion detection solution within a fraction of the time of conventional software.

**The plug and play approach means setup could not be simpler.**

## No software = No complications.

You'll never need to ask "Is it compatible?" again. Protege WX works on any platform and any device with a modern web browser and an internet connection. Windows, Mac, Linux, iOS, or Android. Desktop, tablet, or smartphone. The choice is yours.

The familiarity of a browser and the intuitive interface makes learning a breeze. Program a site from start to finish with no training necessary.

Protege WX launches in basic mode with full access control and intrusion detection ready to go. Enrol on an optional WXpert course to unlock advanced features including building automation, programmable functions, elevator control, wireless locking systems, and additional advanced features.

## Here. There. Anywhere.

The web-based interface means your office is now everywhere. At work, at home, a hotel, at a client's office, even on your mobile phone. Provided you have an internet connection, you now have anywhere-anytime ease of access to your sites.



## Hardware Modules and Optional Accessories.

The modular-based hardware design allows you to scale your system as your requirements change. Start with the controller, or choose one of the cost-effective starter kits, then add optional accessories as and when you need them. The controller is backwards compatible with all Protege expander modules and accessories meaning you can move to Protege WX without having to replace your existing hardware.

### Protege WX Web Enabled DIN Rail Controller

The heart of the Protege WX system, the Controller is the central processing device responsible for the control of security, access control and automation in the Protege WX integrated system.

#### PRT-WX-DIN

- Advanced integration of arming and disarming features allow the control of up to 32 alarm areas
- RS-485 communication interface, onboard 2400bps modem, & a 10/100 Ethernet communications port provide a complete solution for system expansion, offsite monitoring, system communication & integration
- Optional PoE (Power over Ethernet) for both data connection and power supply
- IP Reporting functionality using ICT's ArmorIP protocol, Contact ID over IP, SIA over IP and full text reporting methods
- Highly sophisticated integrated access control with large user capacity & extensive management features
- Programmable functions for performing actions when a particular event or operation occurs, such as adjusting internal lighting levels based on a sensor reading
- Automation points for managing controllable devices such as lighting, air conditioning and signage
- Easily link the Protege System with intelligent SALLIS or Aperio wireless locking solutions
- Onboard support for communication protocols including C-BUS and Savant, for automated building and lighting controls
- Comprehensive front panel LED indicators display device status at a glance
- Firmware upgradable directly from the Protege WX interface



System Capacities	WX	GX
Users	10,000	Unlimited
Events	50,000	Unlimited
Schedules	512	Unlimited
Doors	128	Unlimited
Areas	32	Unlimited
Inputs	512	Unlimited
Outputs	512	Unlimited
Keypads	200	Unlimited
Input Expanders	248	Unlimited
Output Expanders	32	Unlimited
Reader Expanders	64	Unlimited
Analog Expanders	32	Unlimited

## Start small today. Go big tomorrow.

The modular-based hardware design provides the flexibility to accommodate any installation whether it's small, large, residential or commercial.

Optional expandable modules allow you to scale your system as your requirements change. Need more PIRs? Add a Protege Input Expander. Want more doors? Add a Protege Reader Expander. If you reach capacity, you can easily upgrade to the enterprise level Protege GX\*.

DIN-Rail.

\* Protege GX can only be purchased and installed by current IDN members.

ICT ProtegeWX®



## Hardware Modules and Optional Accessories.



### Protege DIN Rail Mini 2 Reader Expander

Extends the number of card reader inputs on the system by 2 (4 when using Multiple Reader mode), the number of zone inputs by 8, and the number of PGM outputs by 8 providing flexible access control, area control and alarm monitoring.

Code: PRT-RDM2-DIN



### Protege DIN Rail 8 Output Expander

Extends the number of outputs on a system by 8, featuring high current Form-C relays providing flexible and structured control of lighting and automation systems.

Code: PRT-PX8-DIN



### Protege DIN Rail 2A Intelligent Power Supply

Provides 12VDC power, ideal for running security, access control or automation devices, along with large numbers of Protege network powered modules in the same installation. A continuous source of power is maintained with the inclusion of intelligent battery backup charging, optimal level maintenance and seamless switch on AC failure.

Code: PRT-PSU-DIN-2A



### Protege Touchscreen Keypad with VoIP Intercom

The Protege Touchscreen Keypad is the ideal solution to creating an outstanding user experience. Eliminate the need for a myriad of keypads, control panels and switches for each part of a system create true integration in any building environment.

Code: PRT-TLCD-VOIP



### Protege Keypad for iPhone

Available exclusively from the iTunes App Store, the ICT Protege Keypad provides a user friendly interface to the Protege integrated access control, security and building automation system directly from your iPhone, iPad or iPod Touch. It provides quick and easy access to various system functions from anywhere – either inside or outside the building – using the internet connection of the device.

Code: PRT-IPHONE



### Starter Kits

Our starter kits are designed as a cost-effective option to provide the components required to get your system underway.

#### Protege WX Access Starter Kit

Kit contains:

- > 1 x Protege WX Web Enabled DIN Rail Controller
- > 1 x Protege DIN Rail 4A Intelligent Power Supply
- > 2 x Protege TSEC Standard Card Readers

#### Protege WX Intrusion Starter Kit

Kit contains:

- > 1 x Protege WX Web Enabled DIN Rail Controller
- > 1 x Protege DIN Rail 2A Intelligent Power Supply
- > 1 x Protege Touch Sense LCD Keypad

To find out more about additional kits that are available, talk to your local distributor.



### Protege DIN Rail 16 Input Expander

Extends the number of inputs on a system by 16, enabling monitoring of a wide range of EOL capable or open contact sensors for security and building automation purposes.

Code: PRT-ZX16-DIN



### Protege DIN Rail 8 Input 4 Output Expander

With 8 inputs for monitoring of a wide range of EOL capable or open contact sensors, and 4 outputs featuring high current FORM C relays, the PRT-IO84-DIN is ideal for large distributed intruder detection and building control systems.

Code: PRT-IO84-DIN



### Protege TSEC Card Reader

An advanced technology card reader available with either 125 kHz or 13.56 MHz smart card capability, or as a multi-technology reader combining both capabilities in a single unit to deliver maximum compatibility while providing a path forward to the latest technology. Ideal for organizations that wish to transition to smart technology at their own pace, as it means they don't need to replace all their cards upfront.

Code: PRX-TSEC



### Protege Touch Sense LCD Keypad

Sleek and stylish, with a capacitive touchscreen keypad, the Touch Sense LCD Keypad offers a modern and eye-catching alternative with an intuitive interface to the Protege system providing area control and security zone status at a glance.

Code: PRT-KLCS

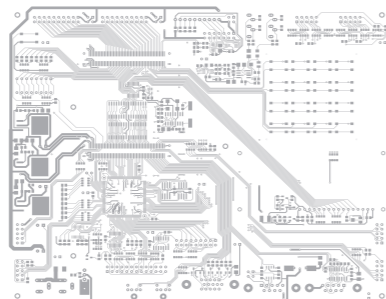


### Protege Keypad for Android

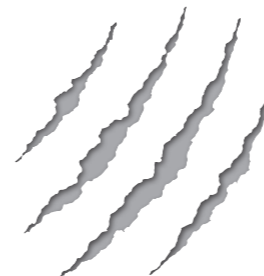
Available exclusively from the Android Market, the ICT Protege Keypad provides a user friendly interface to the Protege integrated access control, security and building automation system directly from your Android device. It provides quick and easy access to various system functions from anywhere – either inside or outside the building – using the internet connection of the device.

CODE: PRT-ANDROID

These are just some of the accessories available. For a full list, please visit [www.ict.co](http://www.ict.co)



DIN-Rail.



ICTProtegeWX®

#### **New Zealand**

##### **Integrated Control Technology Limited**

11 Canaveral Drive, Albany, Auckland 0632

PO Box 302-340, North Harbour, Auckland 0751, New Zealand

Email: sales@incontrol.co.nz Toll Free: (0800) 428 111 Phone: 64 (9) 476 7124

#### **USA**

##### **Integrated Control Technology (USA) LLC.**

2629 W Main Street, Suite 150, Littleton, CO 80120

Email: ussales@incontrol.co.nz Toll Free: (855) 428 9111 Phone: 720 442 0767

Designers & manufacturers of integrated electronic access control, security and automation products. Designed & manufactured by Integrated Control Technology Ltd. Copyright © Integrated Control Technology Limited 2003-2014. All rights reserved.

**Disclaimer:** Whilst every effort has been made to ensure accuracy in the representation of these products, neither Integrated Control Technology Ltd nor its employees, shall be liable under any circumstances to any party in respect of decisions or actions they may make as a result of using this information. In accordance with the Integrated Control Technology policy of enhanced development, design and specifications are subject to change without notice.